

## 18 Fernie Court, Husbands Bosworth, LE17 6LW



**£321,123**

Offering an impressive amount of square footage for its asking price is this spacious four bedroom, three storey modern property. It sits within a pleasant courtyard style development in Husbands Bosworth, conveniently sitting in between the towns of Market Harborough & Lutterworth, with an Adams & Jones office happy to help in each. Accommodation comprises hallway, WC, kitchen/diner, lounge with balcony, four bedrooms, en-suite & bathroom. Outside, there is a driveway, garage & an attractive rear garden.

*Service without compromise*

## Hallway



Double glazed front entrance door. Under stairs storage cupboard. Timber effect LVT fitted in April 2021. Radiator.

## Ground Floor WC



Opaque UPVC double glazed window to front. White two piece suite comprising WC and wash hand basin. Timber effect LVT fitted in April 2021. Radiator.

## Kitchen Diner 16'3" x 10'8" (4.95 x 3.25)



16' 3" x 10' 8" (4.95m x 3.25m) UPVC double glazed rear entrance door and side lights leading out to the rear garden. Fitted with a range of wall and floor mounted kitchen units. Stainless steel one and a half bowl sink with mixer tap and drainer. Electric double oven. Ceramic hob with extractor hood over. Integrated fridge freezer. Integrated dishwasher. Tiled splash backs. Tiled flooring. Radiator. Electric Heatrae central heating boiler replaced in October 2021.



Landing  
Radiator.

Lounge 16'11" x 16'5" (5.16 x 5.00)



16' 11" max narrowing to 10' 9" min x 16' 5" max narrowing to 9' 2" min (5.16m x 5.00m)UPVC double glazed rear entrance door and side lights to balcony overlooking the rear garden. Two radiators.



Balcony

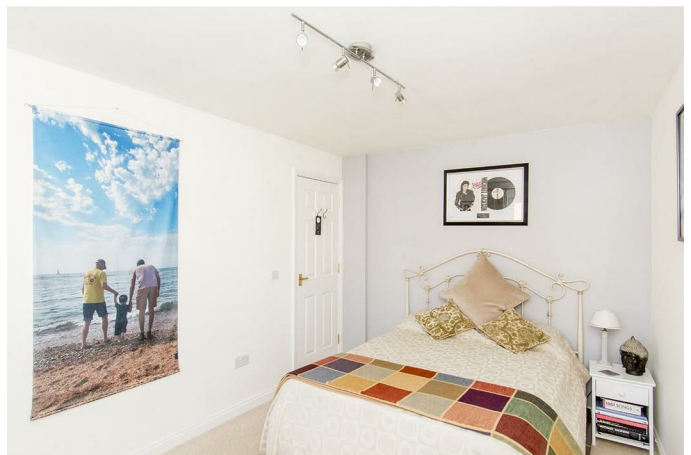


With metal railings and overlooking the rear garden.

Bedroom Three 13'7" x 9'2" (4.14 x 2.79)



13' 7" x 9' 2" (4.14m x 2.79m) UPVC double glazed window to front. Radiator.



**Bedroom Four 9'8" x 6'9" (2.95 x 2.06)**



9' 8" x 6' 9" (2.95m x 2.06m) UPVC double glazed window to front. Radiator.

### Landing

Loft access hatch. Airing cupboard.

**Master Bedroom 16'8" x 9'3" (5.08 x 2.82)**



16' 8" x 9' 3" (5.08m x 2.82m) UPVC double glazed window to rear. Radiator.



**Master En-Suite 7'8" x 6'9" (2.34 x 2.06)**



7' 8" x 6' 9" (2.34m x 2.06m) Opaque UPVC double glazed window to rear. White three piece suite comprising WC, wash hand basin and shower cubicle. Shaver point. Extractor fan. Part tiled walls. Tiled flooring.

Bedroom Two 14'0" x 9'3" (4.27 x 2.82)



14' x 9' 3" (4.27m x 2.82m) UPVC double glazed window to front. Radiator.



Bathroom 9'8" x 6'11" (2.95 x 2.11)



9' 8" x 6' 11" (2.95m x 2.11m) Opaque UPVC double glazed window to front. White three piece suite comprising WC, wash hand basin and panelled bath with built-in shower and glazed shower screen. Shaver point. Tiled flooring. Extractor fan. Part tiled walls.



## Front

Driveway providing off road parking for two cars.

## Integral Garage



Up and over vehicle access door. Internal door through to hallway.

## Rear Garden



Slate pebbled garden with raised plant beds. Paved patio area. Timber fencing.



## Wi-Fi Connection

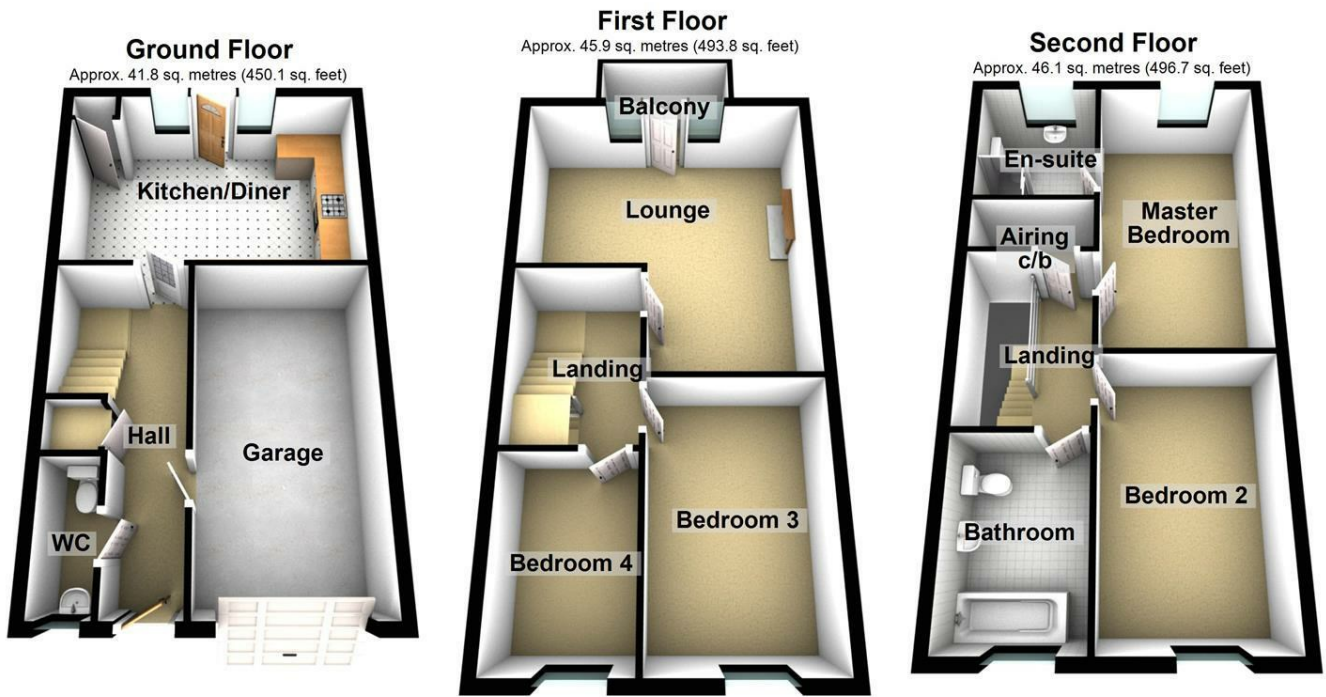


'Gigaclear' high speed wi-fi is currently available and connected to this property. Buyers would need to source their own contract to continue with this service following completion.

**Note For Prospective Buyers**

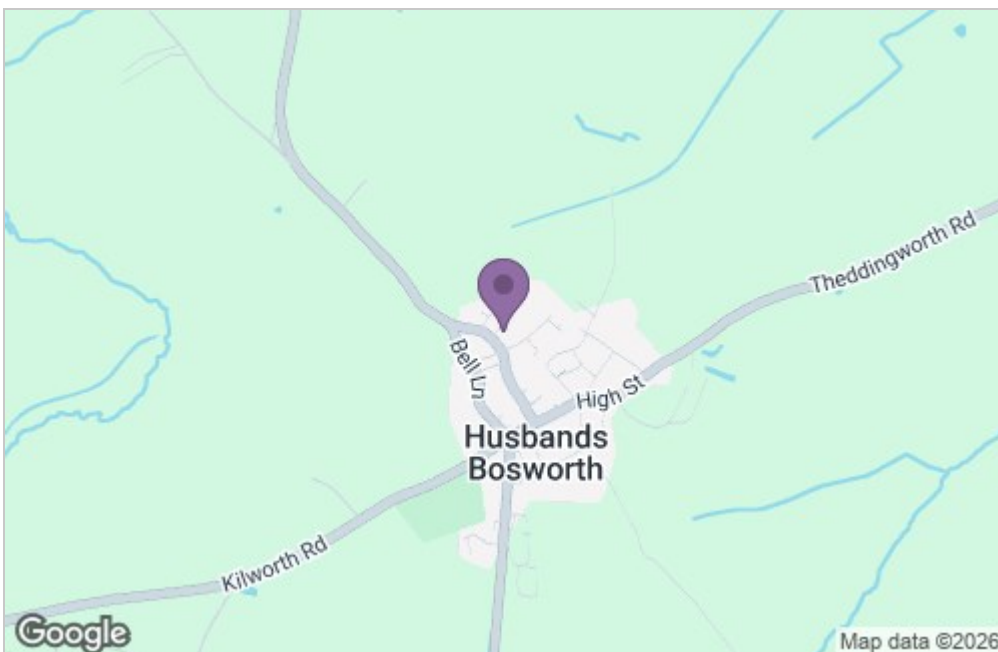
Upon acceptance of an offer, all buyers will need to undertake an identification check for which there will be a charge of £50+VAT per person (non-refundable). These checks are completed to meet our obligations under Anti Money Laundering Regulations (AML) and are a legal requirement.

## Floor Plan

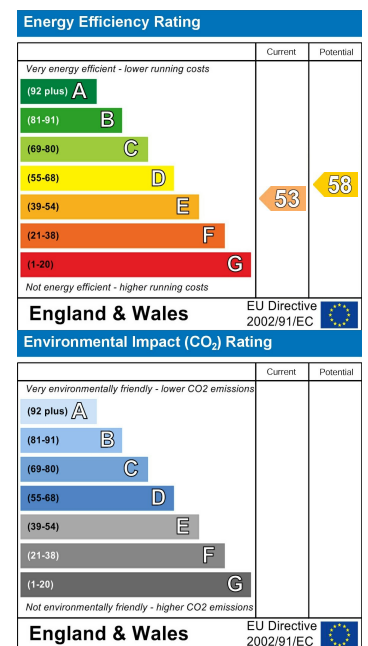


Total area: approx. 133.8 sq. metres (1440.6 sq. feet)

## Area Map



## Energy Efficiency Graph



*Service without compromise*